



SR 1 (Broadway) Bridge over CSX RR & 11th Ave

TDOT Contract # CMGC 04



Pre-Proposal Meeting Agenda

TDOT Contract # CMGC 04

Welcome by TDOT &
Introductions

Sign-In Sheet

Project Overview

CM/GC Process

Design Team

RFP Information

Conceptual Roadway &
Bridge Plans

TDOT Project Website

Stakeholders

Closing Comments

Questions

Project Overview

Purpose and Need

Due to increasing maintenance costs and 20-ton load rating, the 73-year-old bridge needs to be replaced

This bridge is critical in providing access to downtown Nashville

Substandard vertical clearances exist over the railroad tracks

The project needs to be completed as quickly as possible to minimize the impacts to traffic and businesses.

Transportation Investment Report (TIR) provides:

Background on the project

Project needs and improvements

Initial concepts to refine and build upon

List of Stakeholders

Project Overview

Project Goals

Replace
the existing
bridge

Improve traffic
operations &
safety on
Broadway

Improve
the vertical
clearance over
the CSX RR

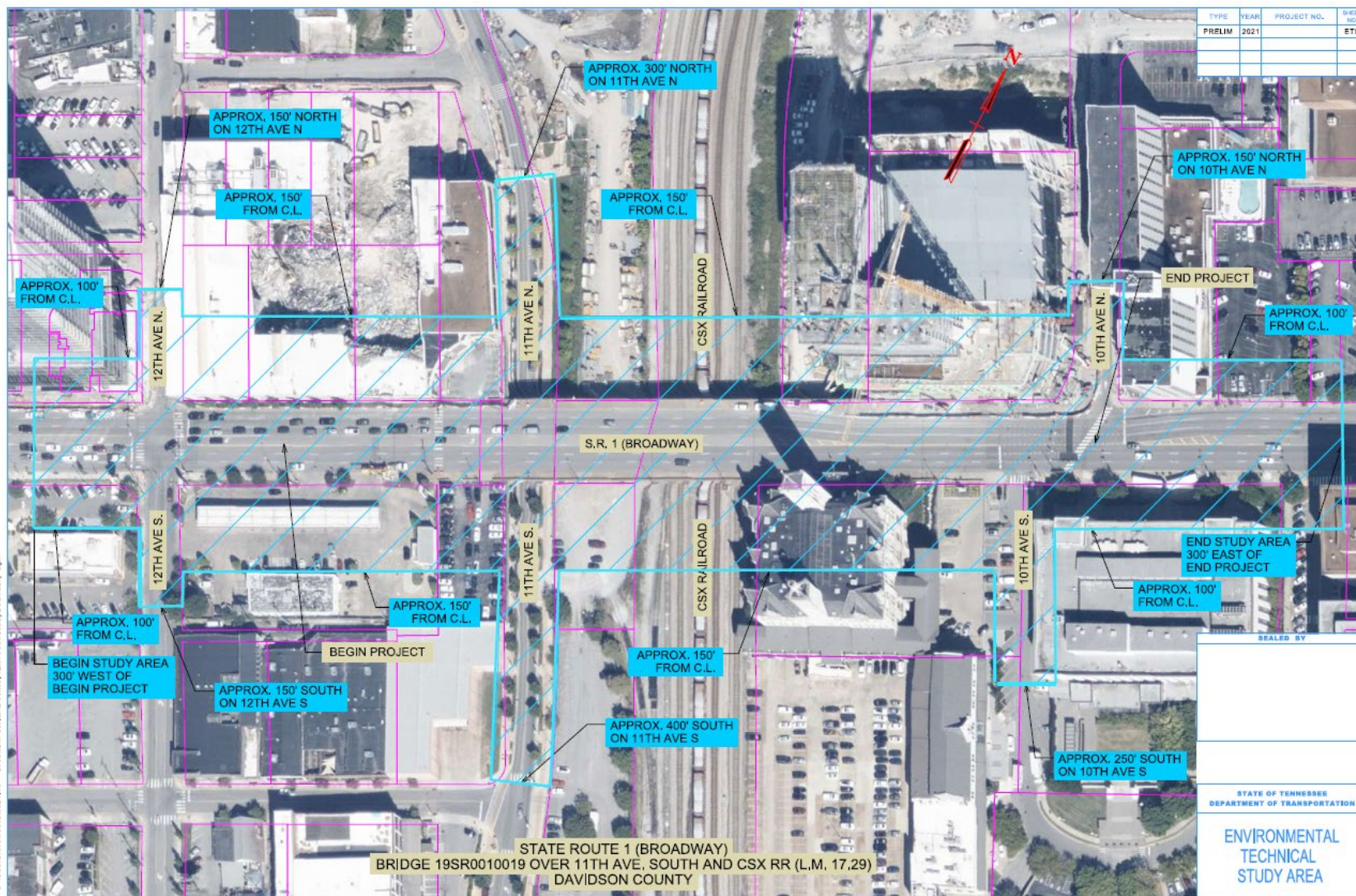
Limit impacts
to traffic &
businesses

Use Accelerated
Bridge
Construction
(ABC)
techniques

Maximize
safety of worker
& the traveling
public

Provide
high quality
design &
construction

Project Overview



Environmental Boundary



CM/GC Process

Features

Contractor brought on as **Construction Manager (CM)** during the design process.

RFP Section 1.1 describes the skills and knowledge the CM agrees to provide during the design phase.

CM will be a key part of the **Integrated Project Team** (TDOT, Design Consultant and Contractor)

Project team refines the **Initial Design Concept** & develops the Final Solution.

CM will develop a **Guaranteed Maximum Price (GMP)** proposal.

If accepted, a **construction contract** will be executed, and construction starts.

Early procurement or construction work may be considered for long lead items or early tasks.

CM/GC Process

RFP Schedule

Section 2.3

RFP Advertised	9/24/2021
Mandatory Pre-Proposal Meeting	10/4/2021
Last Submission of Questions/ Requested Clarifications	10/15/2021
Submittal of Statement of Interest (SOI)/Proposal	10/25/2021 4:00 PM CST
Selection Panel Meetings (Interviews)	11/3 & 11/4/2021
Contractor Notification of Selection	11/19/2021
Anticipated Contract Approval/Execution	12/10/2021

Note: The dates shown are subject to change.

CM/GC Process

Anticipated CM/GC Construction Schedule

Construction Contract Awarded	Summer 2022
-------------------------------	-------------

Construction Completed	5/31/2023
-------------------------------	------------------

Design Team

Lead Design Firm

Gresham Smith
Roadway, ABC Bridge,
Environmental, Lighting, Utilities



Major Subconsultants

Wiser
Survey

American Engineers
Geotechnical

KCI
Traffic Control

Arcadis
Scheduling and Estimating

Modjeski & Masters
ABC Bridge

Information Provided for RFP

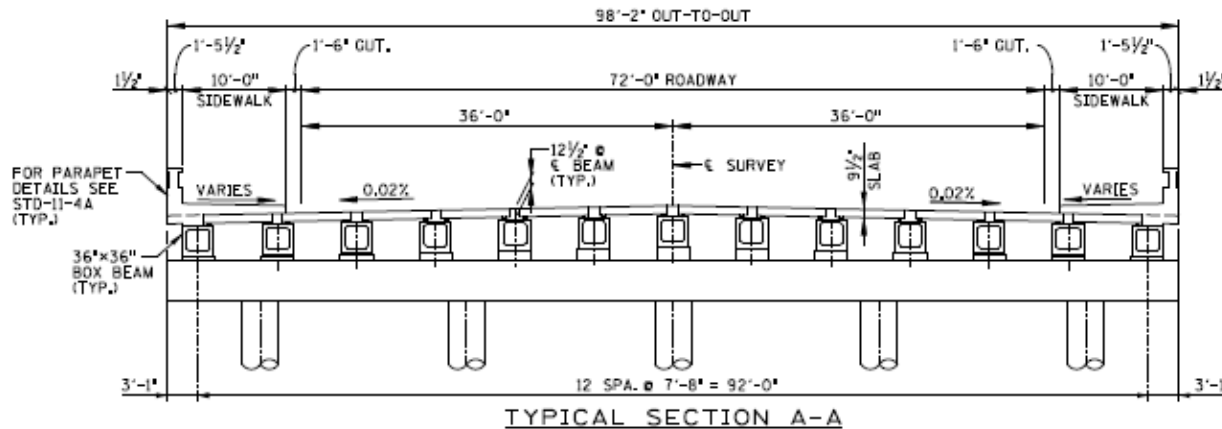
Conceptual Roadway & Bridge Plans

- A Starting Place for development with the selected CM
- Typical Section – 6 lanes plus center turn lane

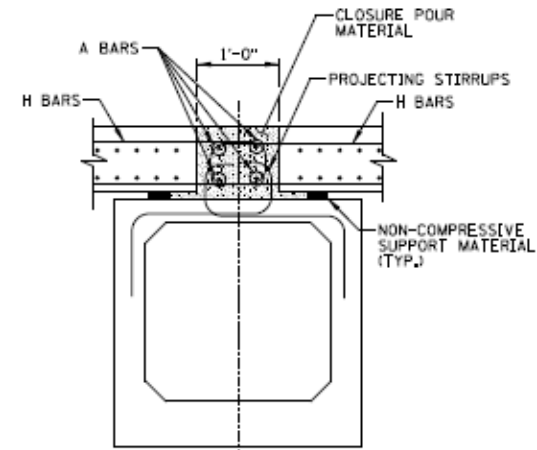
Distinctive Items

- Proposed connections with a Nashville Yards pedestrian bridge and with the 1100 Broadway development
- Decorative bridge rail

Typical Bridge Section



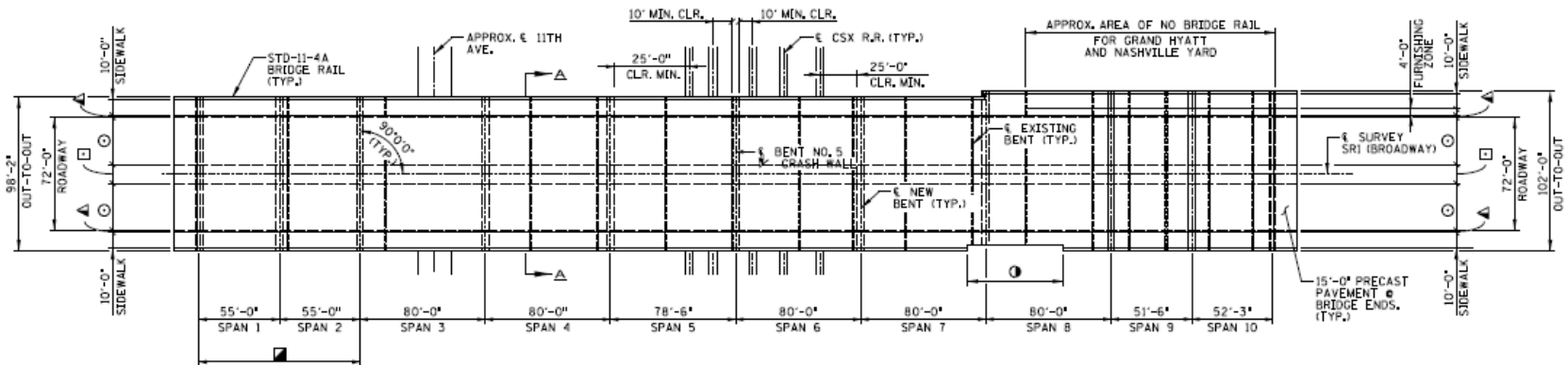
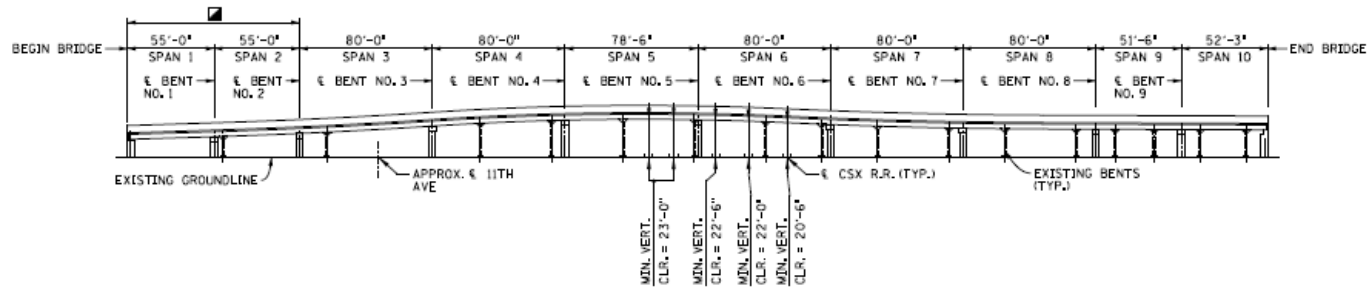
ABC Techniques, such as the precast elements shown in these conceptual details, can be used for both superstructure and substructure components.



PANEL TO BEAM CONNECTION

NOTE: VERTICAL FACE OF SUPERSTRUCTURE UNITS SHALL BE ROUGHENED AT TIME OF CASTING BY CHEMICAL OR OTHER FORMING METHODS.

Bridge Span Arrangement



- DENOTES: 3 LANES @ 10'-0" = 30'-0"
- ▲ DENOTES: 1'-6" CUTTER
- DENOTES: 12'-0" TWO-WAY LEFT HAND TURN LANE
- DENOTES: SPANS MAY BE ABLE TO BE ELIMINATED WITH USE OF WALLS OR GEOFOAM.

- DENOTES: AREA OF NO BRIDGE RAIL AND 61'-9" X 3'-7 1/2" CUT-OUT SECTION FOR HISTORIC UNION STREET

RFP Information

CSX Railroad

- **Minimum Vertical and Horizontal Clearances** shown in the TIR must be obtained
- **Construction impact** coordinated with CSX RR



RFP Information

Closures and Detours

An 8-week maximum full closure is allowed for Broadway

At the end of the closure, at least two lanes in each direction (4 lanes total) must be opened to traffic

Possible Detour Routes –
Church St
Demonbreun St
Charlotte Ave

Maintain access to adjacent businesses

RFP Information

Utilities

The conceptual plans show the utility facilities that are present on, under and near the bridge.



Metro ITS (future)



RFP Information

AT&T Facilities

- AT&T has asbestos Transitite conduit attached to existing bridge
- RFP requires the CM/GC to support the conduit in place during bridge demolition and reconstruction
- The conduit shall then be attached to the new bridge



RFP Requirements

Section 1.23

Prohibited Contact
(Completed Affidavit Form in Appendix C Required)

Section 1.25

Bonding Requirement
(\$50 million minimum)

Section 2.1

Mandatory Minimum Statement of Interest (SOI)/ Proposal Requirements

Section 2.5

Written Questions Only by QR Form
Official Responses by QR Form Posted on Project Website

Section 2.3

Last Day for Submitting Questions – 10/15/21

Section 3

Proposal & Interview Evaluation Criteria of Interest
(Scoring Forms in Appendix D)

Project Website

TN TDOT
Department of Transportation

Go to TN.gov

Search TDOT

Traveler how do I... Business how do I... Government how do I... Find Local Information Sitemap Index of Services

COVID-19 INFORMATION

Alternative Contracting

Design-Build Contracts

Construction Manager/General Contractor (CM/GC) Contracts

Construction Manager/General Contractor (CM/GC) Contracts

CM/GC Explained (2019)

Watch later Share

Construction Manager / General Contractor

Watch on YouTube

Construction Manager/General Contractor (CM/GC) is a contracting method that involves a Contractor in the design and construction phases of the project. The intent is to form a partnership with TDOT, the Designer, and the Contractor. The goals of this partnership are to mitigate risk, improve the construction schedule, streamline the design process, and develop a project that adheres to the budget.

For questions or comments about the CM/GC process, please email: LuObrien@tn.gov

CURRENT ADVERTISEMENTS

- ***CM/GC SR-1 (Broadway) Notice to Contractors for RFP***
- Notice to Consultant Engineers Regarding a Request for
- ***Potential CM/GC Project in Region 4*** - 09/29/21

ACTIVE PROJECTS

- CM/GC SR-1 Project Davidson County
- CM/GC SR-10 Project Hamilton County

What's available there now?

- Bridge TIR
- Existing Bridge Plans
- Form QR
- Conceptual Plans
- Sample CM/GC Contract

What will be added there as the project progresses?

- Official QR Responses
- Any RFP Addendums
- TEER Document
- Pre-Proposal Presentation

CM/GC Project SR-1

SR-1 (Broadway) Bridge over CSX and 11th Ave

actor (CM/GC)

The files presented here are FOR INFORMATION ONLY. TDOT makes no warranty of any kind, express or implied, and specifically makes no warranty that said file(s) shall be fit for any particular use. Any description of said file(s) shall not be deemed to create an express warranty that such file(s) shall be fit for any particular use. Receiver assumes all risk and liability for any losses, damages, claims or expenses resulting from the use of any file(s) furnished by TDOT.

CM/GC SR-1 (Broadway) Notice to Contractor for RFP - 09/24/21

Reference Material

Stakeholders

Agencies

TDOT

City of Nashville

Businesses

Historic Union Station Hotel

Grand Hyatt Hotel

Nashville Yards

1100 Broadway *(future development)*

Closing Comments



Questions?

CONTACT

Lia Obaid, PE

615.532.7522

Lia.Obaid@tn.gov